

# KB-0086-Flickering Mosaics & Disabling Hardware Acceleration

## GENERAL

<b>Distribution</b>	<b>OEM/Partner/Distributor</b>	<b>Installer</b>	<b>Customer</b>
	YES	YES	YES
<b>Last Update</b>	27-05-2009		
<b>Product</b>	WebCCTV, GuardNVR/DVR		
<b>Version</b>	All		

## DESCRIPTION

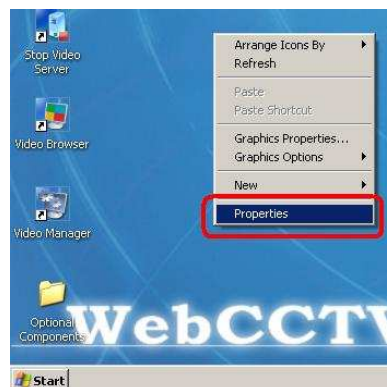
In certain cases when a mosaic is loaded in the web application, it seems that two or more cameras are loaded in the same camera window and a flickering effect is present (very fast switching between the cameras in the viewing window). The camera that is loaded incorrectly has a black window.

This article describes how to solve this.

## SOLUTION

Please execute the steps below:

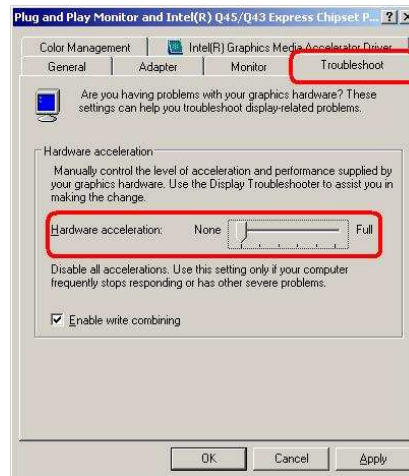
- Right click on your desktop and select **Properties**.



- Select the **Settings** Tab. Click **Advanced**.



- Select the **Troubleshoot** Tab. Put the **Hardware Acceleration** slider on **None**. (Slider to the left)



- Click **OK** till all windows are closed.

**Remark:** By putting Hardware Acceleration to None, the *Masking grid will not be visible* when opening the Activity Detection page of a camera in the Video Manager. If you need the grid for your configuration, put the Hardware Acceleration slider to the right first again.